



ADJUSTA STAIRS

VARIABLE ACCESS IN MINUTES



PROUD PROVIDER THANKS TO



CONTACT US



204-806-6206



winnipeg@scaffolding.ca



www.scaffolding.ca

YOUR BUILD. OUR BUSINESS.



ADJUSTASTAIRS

EFFORTLESS VARIABLE ACCESS IN MINUTES

As construction projects worldwide strive to eliminate the dangers of unsafe ladders, Northstar Access & SafeSmart proudly present AdjustaStairs. This innovative product is rapidly becoming the preferred choice for industries and trades requiring safe and efficient temporary multi-level access.

Our customers identified a clear need in the market, and since developing our first set of portable stairs, the AdjustaStairs system has evolved into a globally recognized and trusted solution.

When searching for market-leading portable stairs, look no further than AdjustaStairs.

KEY BENEFITS

- **Safer than a Ladder:** Allows multiple users to carry tools and equipment between levels simultaneously.
- **Quick Setup:** Takes just 5 minutes to set up.
- **Instant Adjustment:** Simply place the stairs at the required level, and the treads self-level to suit the height. Once the handrails are raised and the stairs are secured top and bottom, they're ready to use – no additional sign-off or certification needed.

Choose AdjustaStairs for unmatched safety, efficiency, and ease of use.



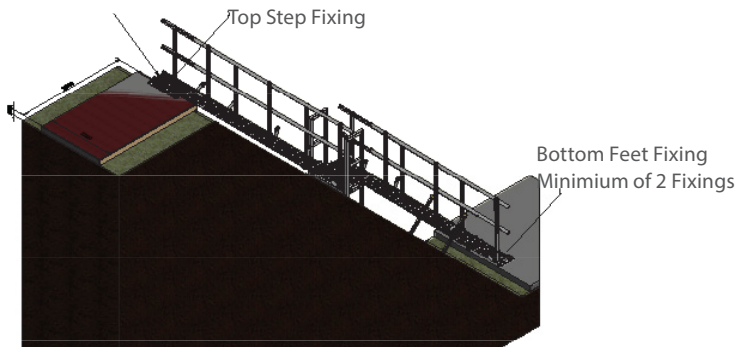
ADJUSTASTAIRS: HOW DO THEY SELF-LEVEL & ATTACH?

ADJUSTASTAIRS

This innovative design allows the treads to move with the stringers. Treads will self-level to provide a firm, flat surface at the desired height. Once level, they are fixed to the support surface as shown below.

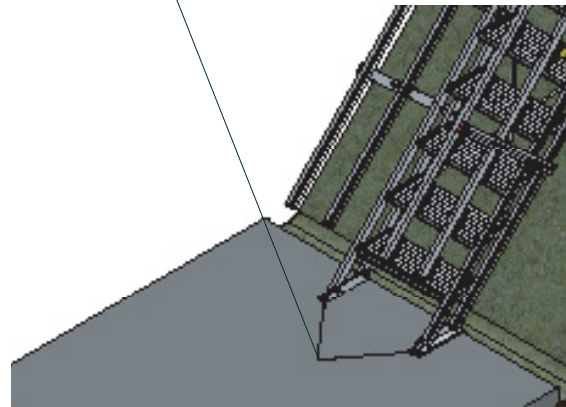
FIXING DETAILS - GENERAL

*Recommended Fixings:
Minimum of 4 Fixings per Top Step
Anchors Subject to Substrate Assessment



FIXING DETAILS - BOTTOM FEET

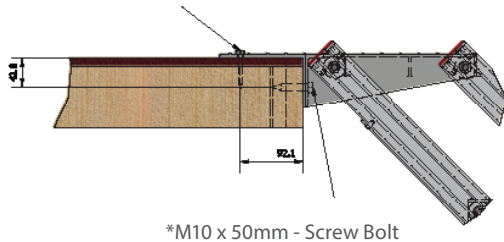
*M6 x 50mm Anchors



FIXING DETAILS - TOP STEP

WOOD FIXING - TOP STEP

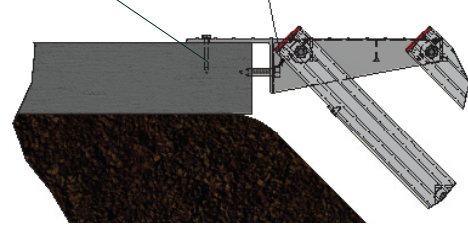
*M6 x 50mm - Coach Bolt



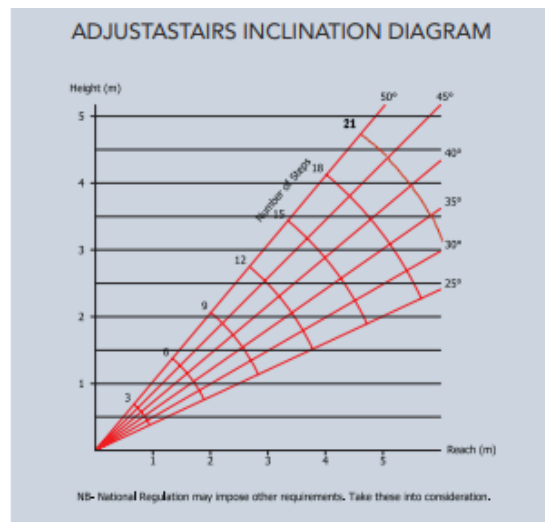
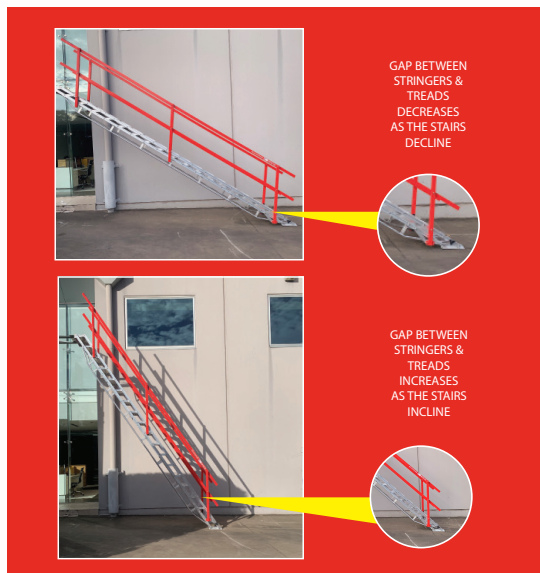
CONCRETE FIXING - TOP STEP

*M6 x 50mm - Screw Bolt

*M10 x 50mm - Screw Bolt



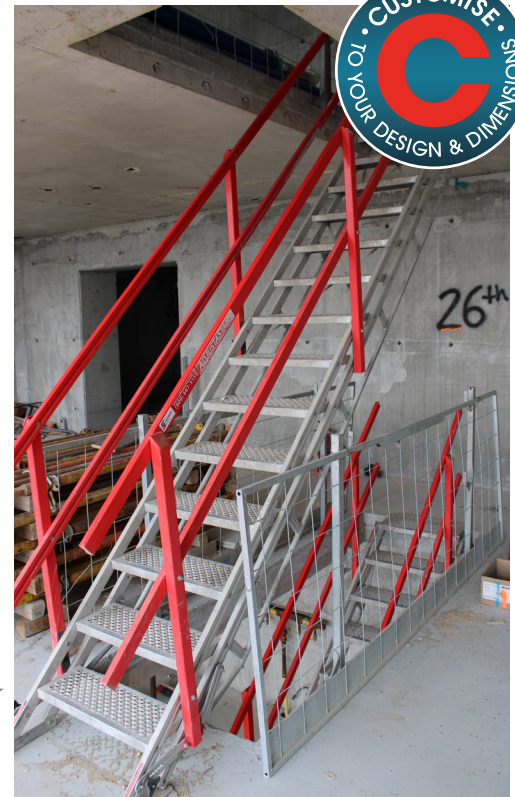
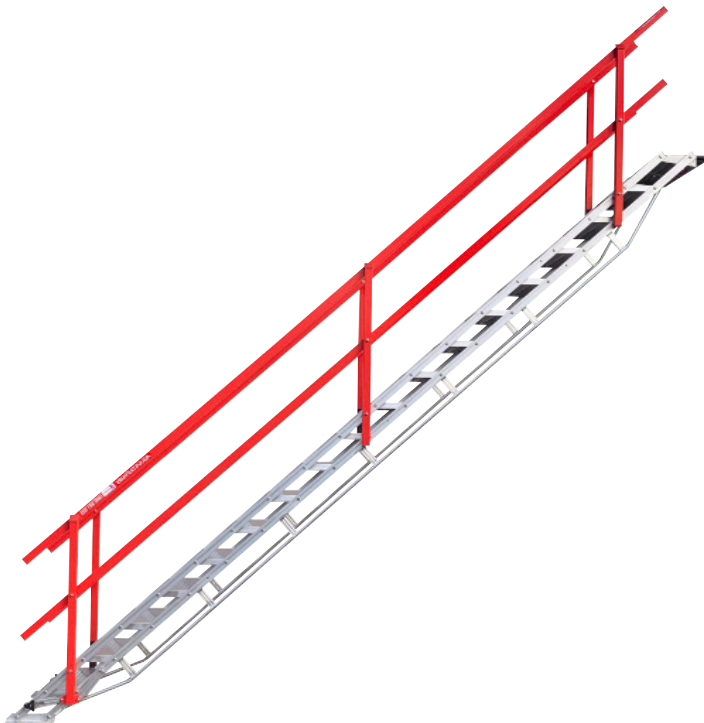
*The recommended minimum sizes and quantities of Fixings noted in the diagrams below are subject to assessment of the supporting structure and substrate by a competent person for the loads imposed by the stair and its use.



ADJUSTASTAIRS ADVANTAGES

ADJUSTASTAIRS

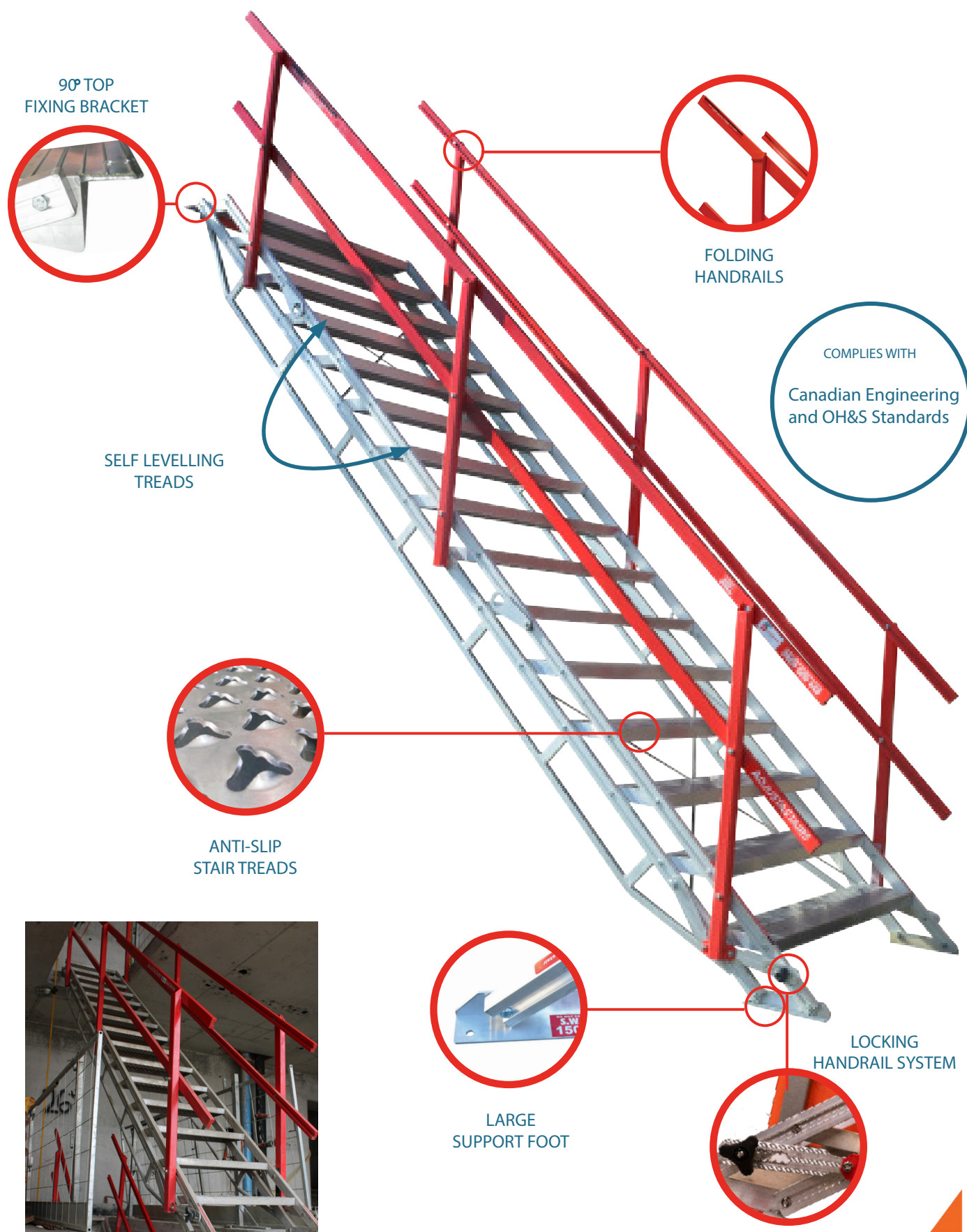
- Treads self level to suit any height within the stair's range
- Lightweight, heavy duty Aluminum for easy relocation around the site
- One piece unit can be set up in seconds and joined in-line
- Safe, fast, easy access between floors, decks & in trenches
- Folds flat for easy storage & transportation
- Durable - built to last
- Available with fibreglass stiles and rails for electrical safety
- Available with open raised tread to shed snow, ice and mud, and increase grip



1200MMW
CRANEABLE STAIRS



ACCESSORIES



ADJUSTASTAIRS

MODELS AVAILABLE FOR RENT

600MM WIDE ALUMINUM

Code	Steps	Suggested Height Range	Rental Price*
210813	6	0.97M - 1.33M	\$175.00
210814	9	1.43M - 2.0M	\$225.00
210815	12	1.91M - 2.67M	\$325.00


2.5kPa

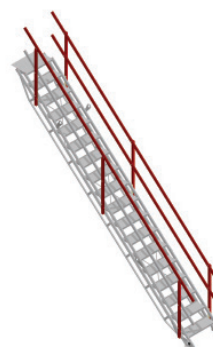
Weight Rating

150Kg

Max Point Load

600MM WIDE ALUMINUM

Code	Steps	Suggested Height Range	Rental Price*
210816	15	2.39M - 3.33M with support truss under stringers	\$400.00
210817	18	2.87M - 4.0M with support truss under stringers	\$475.00
210869	21	3.34M - 4.65M with support truss under stringers	\$565.00


2.5kPa

Weight Rating

150Kg

Max Point Load

MODELS AVAILABLE FOR SALE

Pricing available upon request

1200MM WIDE ALUMINUM

Code	Steps	Suggested Height Range
210821	3	0.49 - 0.67
210822	6	0.97M - 1.33M
210823	9	1.43M - 2.0M


2.5kPa

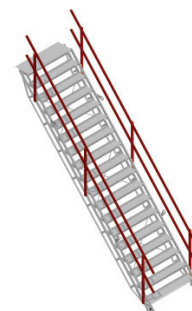
Weight Rating

150Kg

Max Point Load

1200MM WIDE ALUMINUM

Code	Steps	Suggested Height Range
210824	12	1.91M - 2.67M with support truss under stringers
210825	15	2.39M - 3.33M with support truss under stringers
210826	18	2.87M - 4.0M with support truss under stringers


2.5kPa

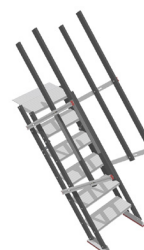
Weight Rating

150Kg

Max Point Load

600MM WIDE FIBREGLASS

Code	Steps	Suggested Height Range
210833	6	0.94M - 1.3M
210743	7	1.10M - 1.52M


300kg

Weight Rating

*Lifting Lugs included

^Suggested height range of stairs listed allows for an angle of slope of between 32 – 48 degrees

*Pricing is subject to change

YOUR BUILD. OUR BUSINESS.

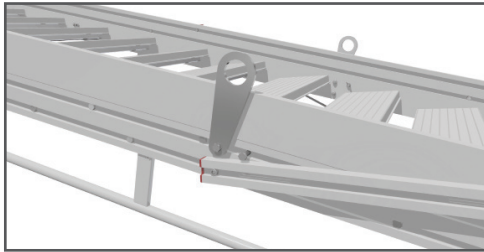


ACCESSORIES

LIFTING LUGS

Code	Description
210838	Lifting Lugs

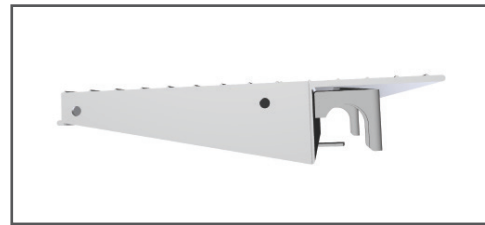
- Attach to any aluminium AdjustaStairs model
- Compatible with 600mmW or 1200mmW AdjustaStairs



SCAFFOLD MOUNT HOOK

Code	Description
210819	Scaffold Mount Hook

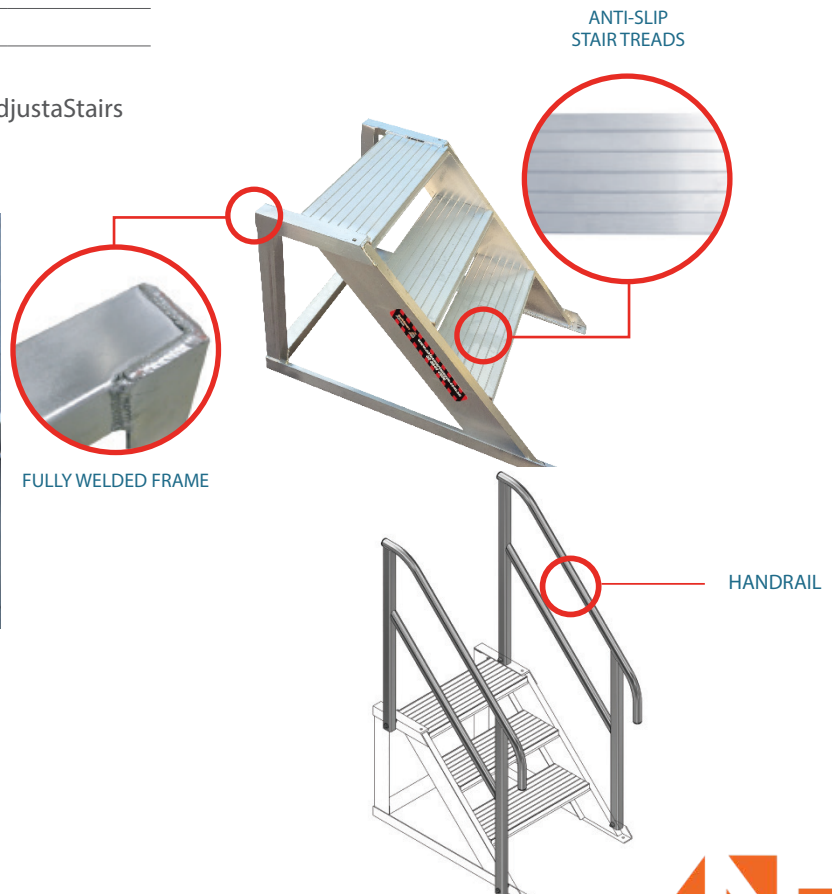
- Replaces the AdjustaStairs top step and clamps stairs to a scaffold tubular ledger
- Compatible with 600mmW AdjustaStairs



STEP ATTACHMENT

Code	Description	Width	Height
210259	Step Attachment	600mmW	600mmH
210851	Step Attachment	1200mmW	600mmH
210290	Step Attachment Handrail (optional)		

- Add 600mm of height to either single or double width AdjustaStairs
- Can be used as an independent stair



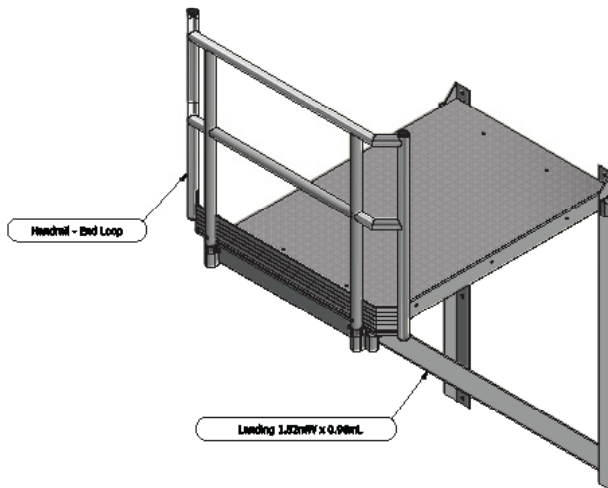
ACCESSORIES

HANGING LANDING

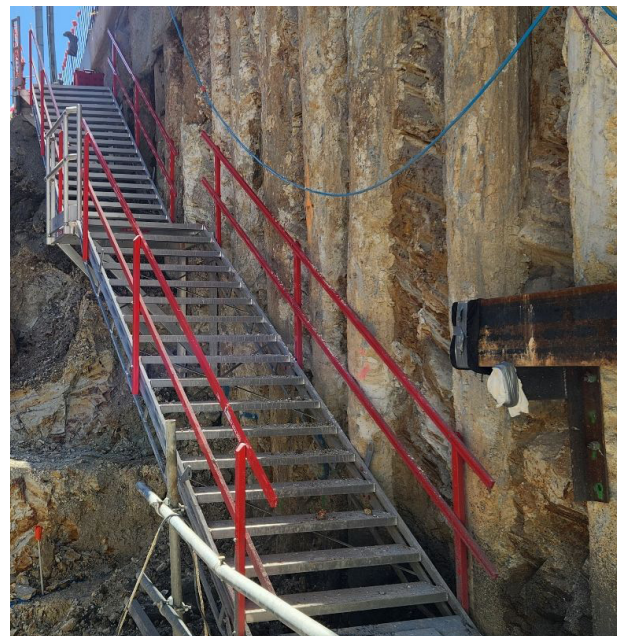
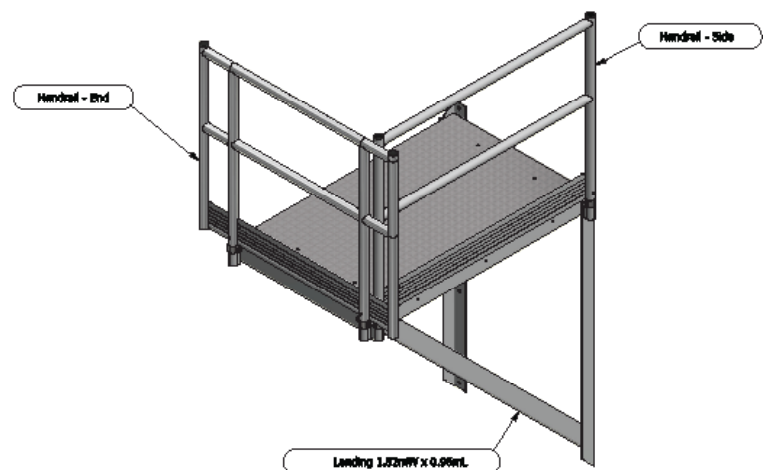
Code	Description
210278	AdjustaStairs Hanging Landing 1.52mW x 0.96mL with wall braces
210919	AdjustaStairs Hanging Landing End Loop Handrail - suits 1200mmW configuration
210920	AdjustaStairs Hanging Landing End Flat Guardrail - suits 600mmW configuration
210921	AdjustaStairs Hanging Landing Side Flat Guardrail - suits 600mmW configuration

- Perfect to create a long stair system into a pit or shaft
- Much smaller footprint than a scaffold tower - perfect for sites where space is limited

LANDING WITH LOOP END GUARDRAIL
(1200mmW Stair Configuration)



LANDING WITH LOOP END GUARDRAIL
(600mmW Zig-Zag Stair Configuration)

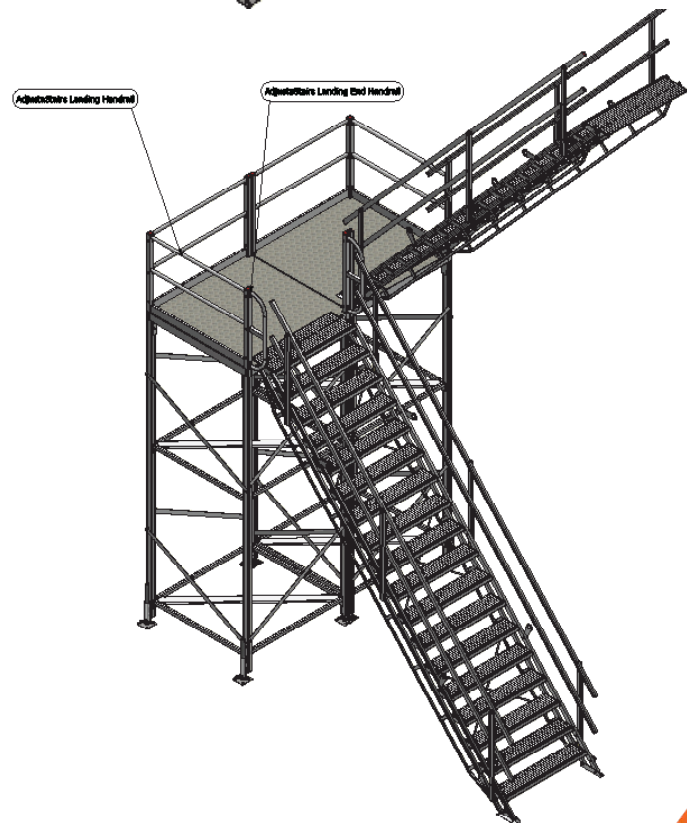
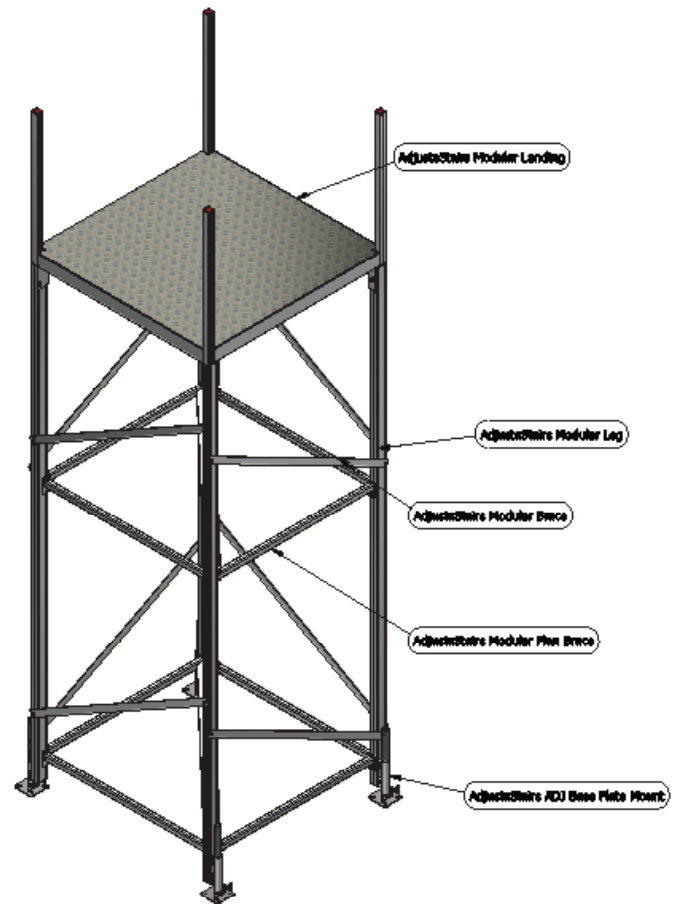


ACCESSORIES

MID LANDING SYSTEM

Code	Description
210149	AdjustaStairs 1mH Mid Landing
210150	AdjustaStairs 2mH Mid Landing
210151	AdjustaStairs 3mH Mid Landing
210152	AdjustaStairs 4mH Mid Landing

- AdjustaStairs Mid Landing System available for landing heights 1-4m
- 1500mm x 1500mm landing
- Custom sizes available for single and double width AdjustaStairs



INDUSTRY APPLICATIONS

SLOPE ACCESS

- Stairs will self-level to suit the angle of the Slope
- Multiple stairs can be joined end to end to span any Slope length
- Top and mid landings can be constructed from Proscaf
- Fixing options include: bolting top of stairs to timber sleeper or structural ply, pinning into dirt at the bottom



HEADSTOCK ACCESS



EXCAVATION ACCESS

- Adjustability of the stairs makes them ideal for excavation access, where levels are constantly changing



RAIL ACCESS

- Non-conductive fibreglass AdjustaStairs may be required for use inside the rail corridor.
- Set up in seconds for access from platform level to the rail line.
- Clamping options available to avoid drilling into rail platform.



TRUCK ACCESS

- Truck AdjustaStairs have an extended top lip (for grip) and strutlocks pre-fitted – no fixing required.



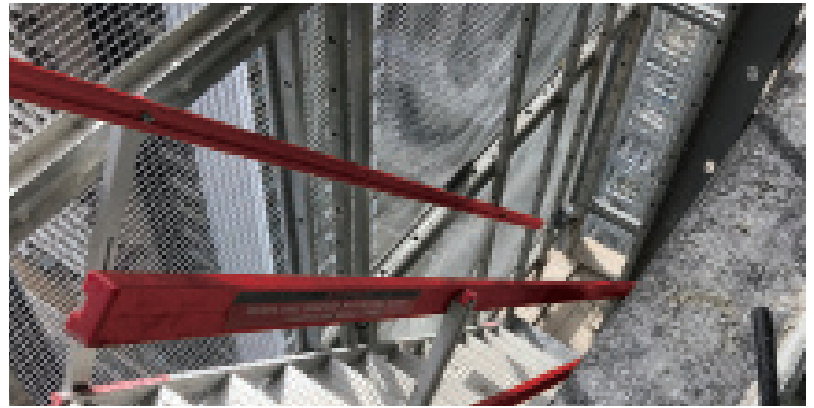
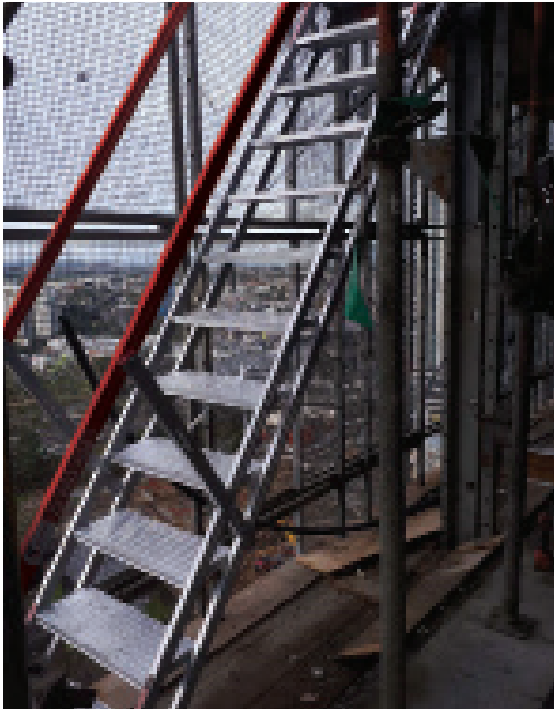
FORMWORK ACCESS

- Use AdjustaStairs instead of a ladder for your primary or secondary access
- Much quicker to set up and move than a scaffold tower
- 1200mmW version is ideal for areas with high foot traffic

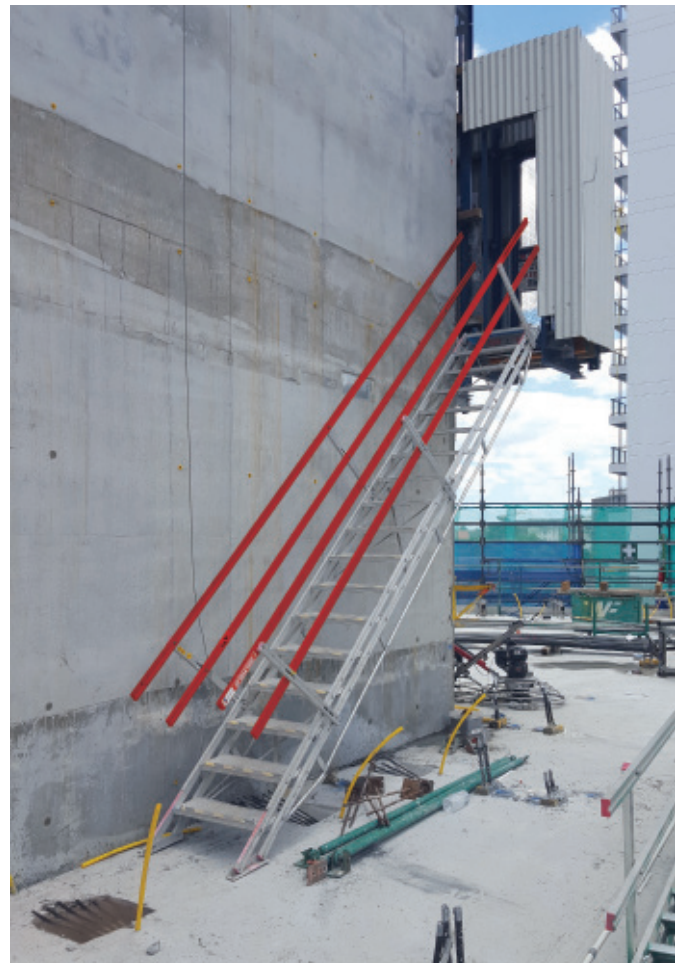


FORMWORK SCREEN ACCESS

- Adjustable feature means that the stairs can be simply fitted inside formwork screens.
- Stairs can be custom made to length to fit different screens.



JUMP FORM ACCESS



INDUSTRY CASE STUDY



Kiewit Bonatti TMEP Partnership - AdjustaStairs

THE CHALLENGE

Kiewit Bonatti partnership were awarded the construction of an 85-kilometre section of the TransMountain pipeline from the Coquihalla Summit to Bridal Veil Falls, BC. Near Hope, BC they had several steep slopes which their staff needed to safely access.

THE SOLUTION

Fortunately, this is not a problem for the AdjustaStairs with #redrails. The AdjustaStairs were used in conjunction with Modular landings and able to provide safe and code compliant access for the entire slope. This is made simply through the inclination adjustability and self-leveling capability of the AdjustaStairs.

THE RESULT

In a short set-up time, the client gained instant foot access for the entirety of the slope length as a long term solution that can be used year-round.



PROUD PROVIDER THANKS TO



PROUD PROVIDER THANKS TO



204-806-6206



winnipeg@scaffolding.ca



www.scaffolding.ca